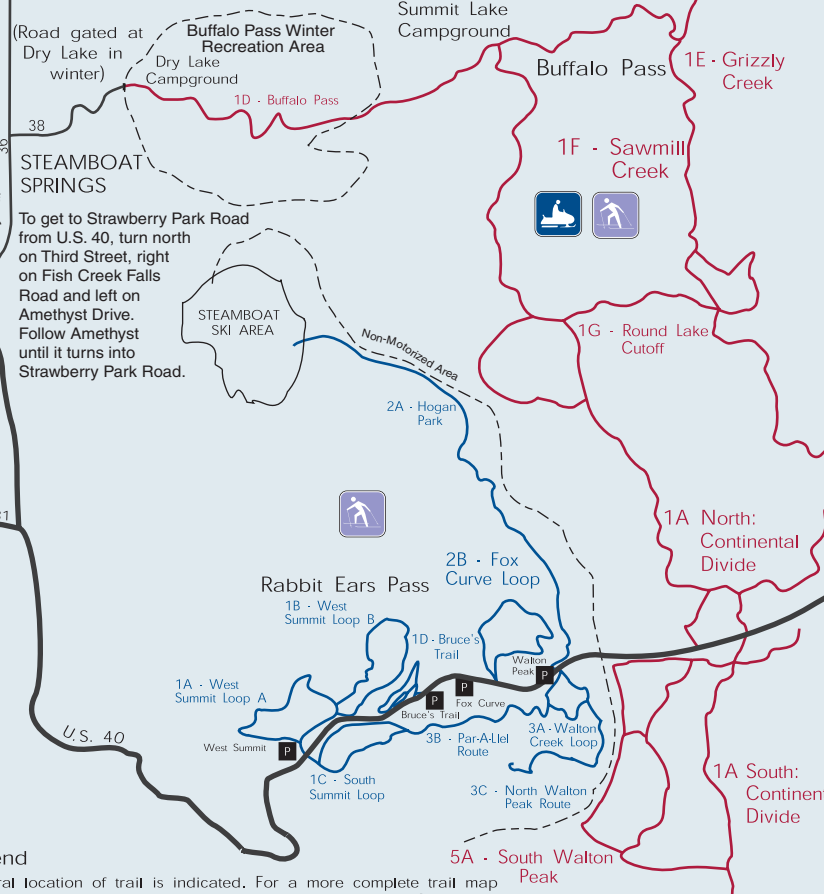
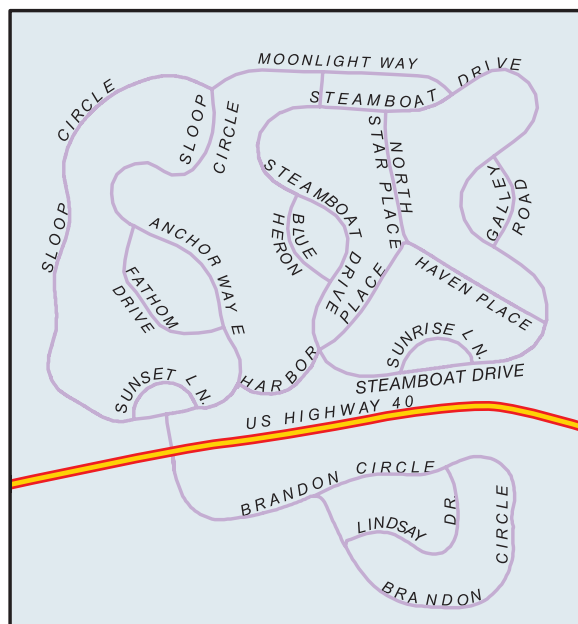


SNOWMOBILE, SNOWSHOE & CROSS COUNTRY SKI ROUTES

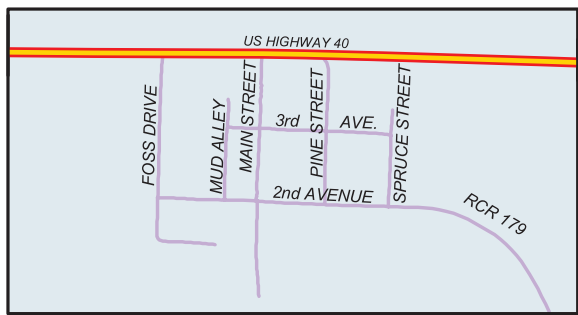
Backcountry permits are required for all users. Free Permits are available at Dry Lake, Muddy Creek, and Grizzly Creek trailheads or the Forest Service office in Steamboat Springs.



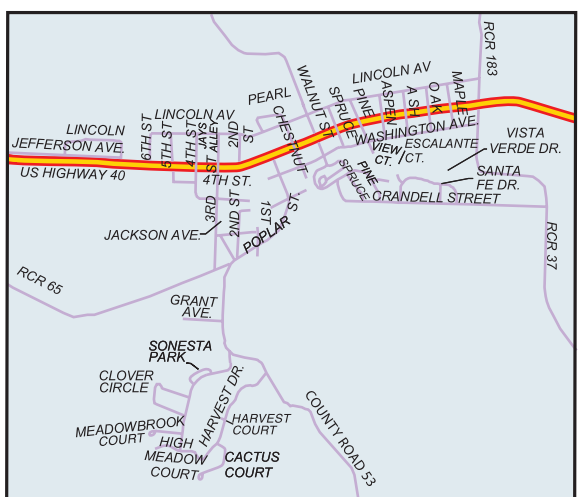
Sources: Routt County, Routt Powder Riders and the U.S. Forest Service.



STEAMBOAT II & HERITAGE PARK



MILNER



HAYDEN

Cross Country Ski General Information

1. Park only in designated areas, identified by large trailhead signs.
2. Skiing is recommended from the West Summit east to Walton Creek, in areas north and south of U.S. 40.
3. Ski routes are marked with blue diamonds and/or bamboo poles. After heavy snowfalls, this signage may not be visible.
4. Routes are not groomed and have steep sections. The exception is Bruce's Trail, which is occasionally groomed in early ski season.
5. Dogs' feet may damage ski tracks. Dog droppings should be removed.

Snowshoe General Information

Snowshoers are welcome to use the marked cross country ski routes on Rabbit Ears Pass, but they should travel parallel to the ski tracks, not on them. Snowshoes damage ski tracks.

Recommended routes for snowshoeing are Walton Peak Loop and Bruce's Trail because these routes are shorter.

Snowmobile General Information

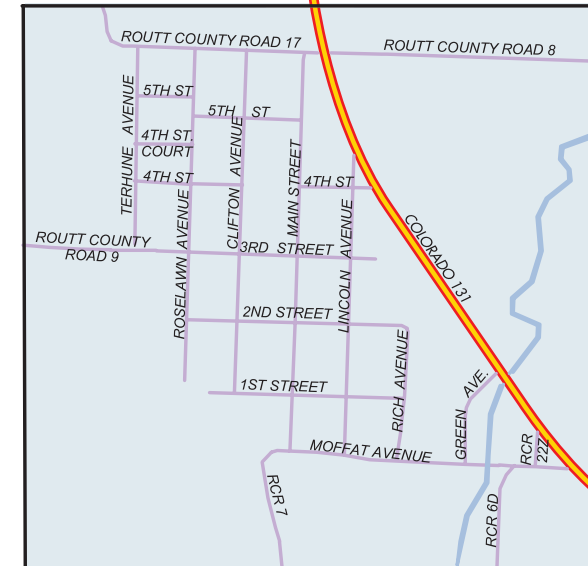
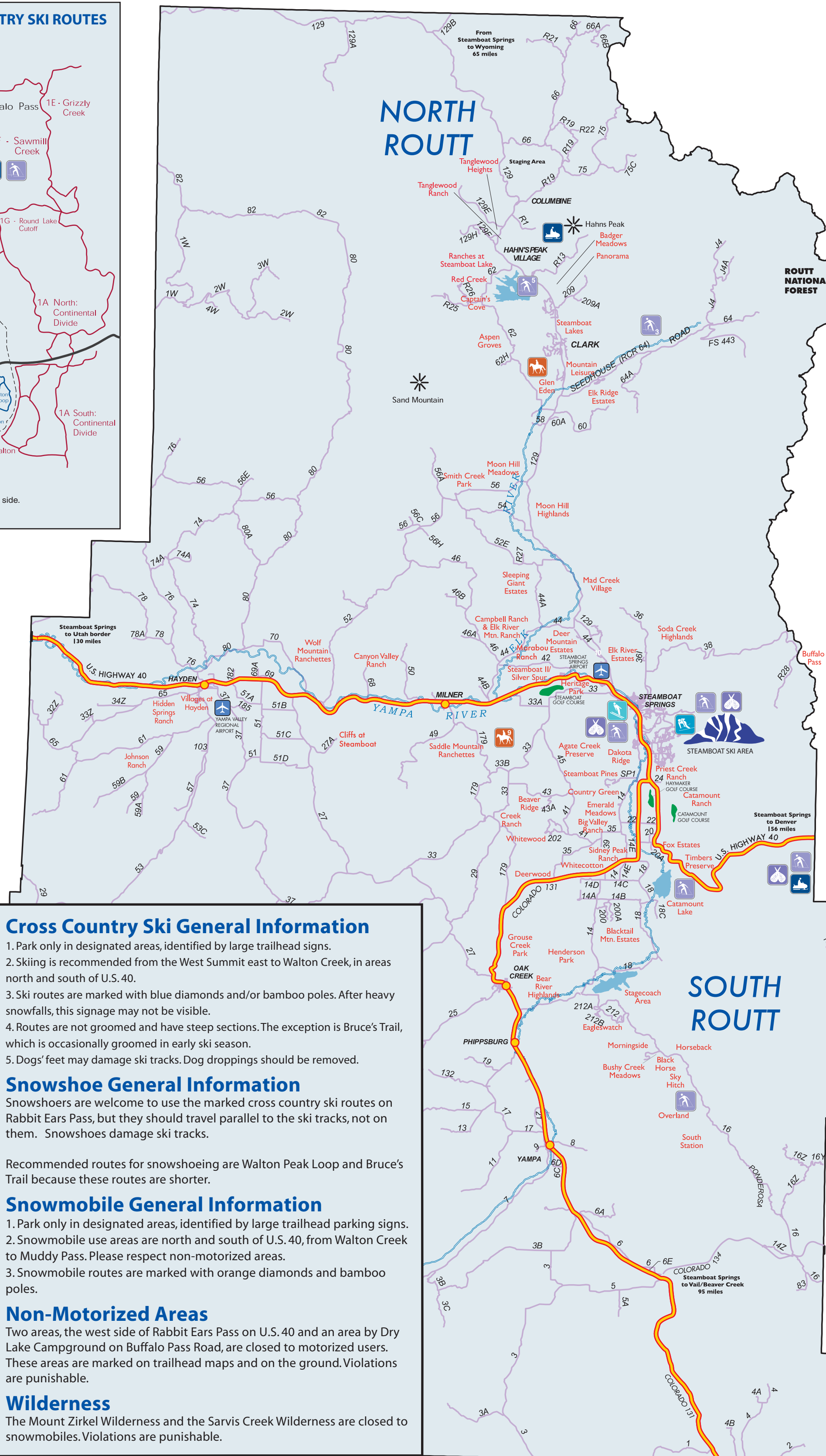
1. Park only in designated areas, identified by large trailhead parking signs.
2. Snowmobile use areas are north and south of U.S. 40, from Walton Creek to Muddy Pass. Please respect non-motorized areas.
3. Snowmobile routes are marked with orange diamonds and bamboo poles.

Non-Motorized Areas

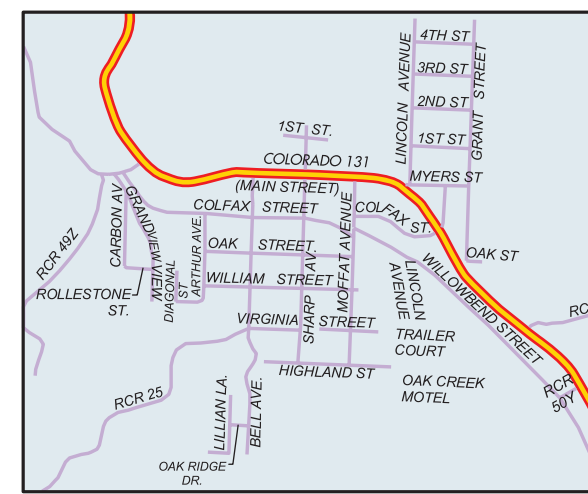
Two areas, the west side of Rabbit Ears Pass on U.S. 40 and an area by Dry Lake Campground on Buffalo Pass Road, are closed to motorized users. These areas are marked on trailhead maps and on the ground. Violations are punishable.

Wilderness

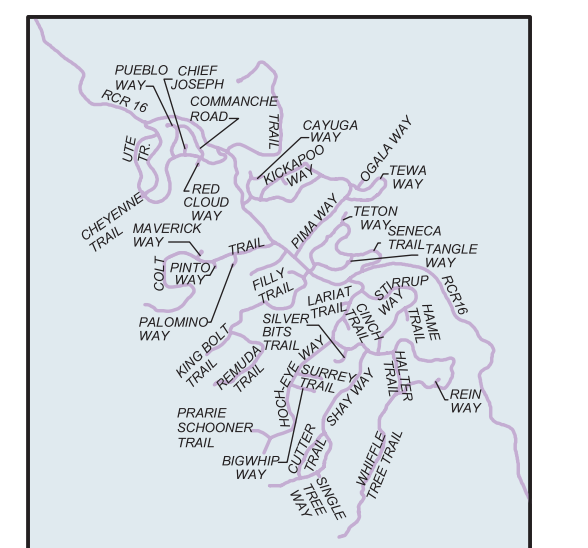
The Mount Zirkel Wilderness and the Sarvis Creek Wilderness are closed to snowmobiles. Violations are punishable.



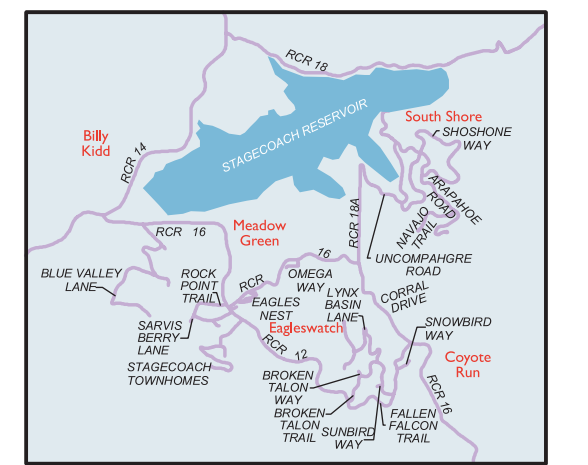
YAMPA



OAK CREEK



STAGECOACH (LYNX PASS AREA)



STAGECOACH (NEAR RESERVOIR)